

CASCOS C5S WAGON

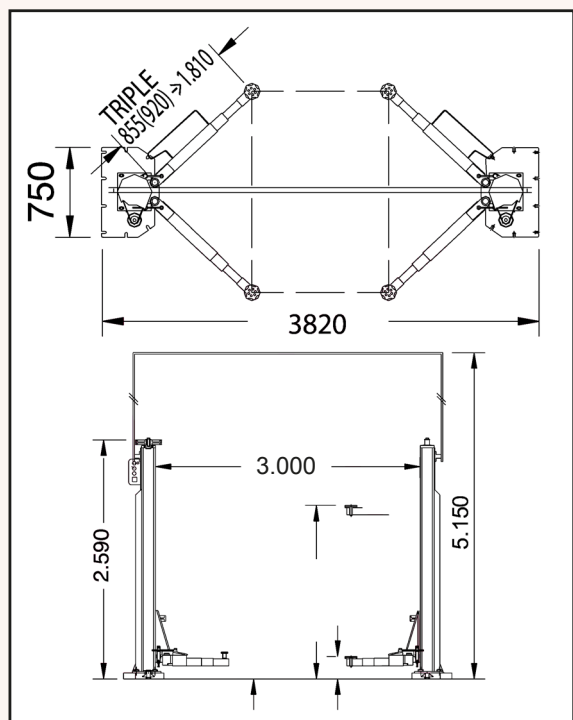
TWO POST CLEAR-FLOOR LIFT

The Cascos C5S Wagon is a clear-floor, electro-mechanical, 2 Post lift with a 5,000kg capacity, designed specifically for Light Commercial Vehicles, Ambulances, Armoured Vehicles and the like.

Symmetrical 3-stage arms allow complete flexibility, with the option to mount a vehicle in either direction, and the unique 'SlenderTec' hot-rolled, solid steel post profiles allow the lift to be constructed with narrow posts, which minimise the lift footprint, with no operational loss. Standard installation will see wiring between the posts travel overhead, via the supplied archway but under-floor installation is available as an option.

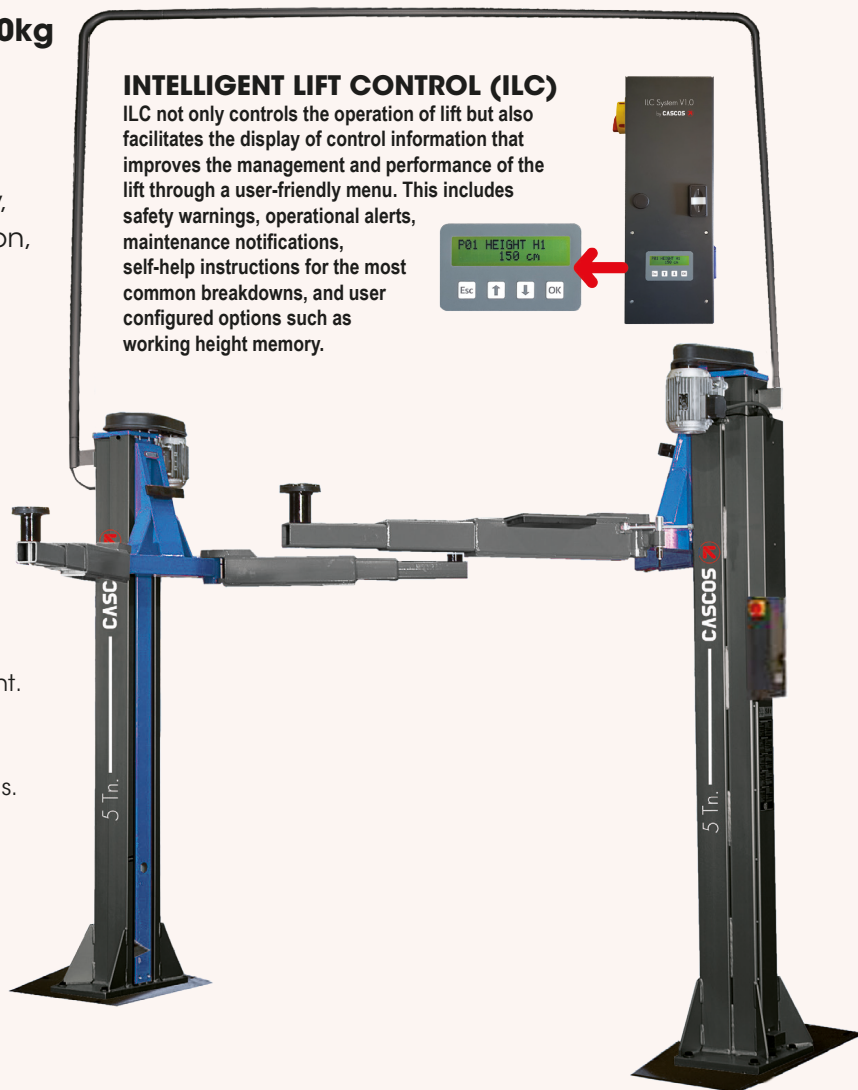
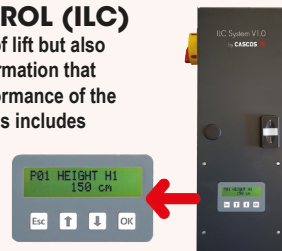
KEY FEATURES

- Lift exclusively designed for van specialists - can accommodate most vehicles up to 5,000 kg.
- 4x 3-stage symmetric arms for a safe working environment.
- Solid, reliable and durable.
- Maximum working space between posts.
- Reversible: It is possible to lift the vehicle in both directions.
- Minimum maintenance.
- Intelligent Lift Control.



INTELLIGENT LIFT CONTROL (ILC)

ILC not only controls the operation of lift but also facilitates the display of control information that improves the management and performance of the lift through a user-friendly menu. This includes safety warnings, operational alerts, maintenance notifications, self-help instructions for the most common breakdowns, and user configured options such as working height memory.



TECHNICAL SPECIFICATIONS

- Load Capacity: 5,000kg
- Arms: 4x 3-stage symmetrical
- Min/Max arm length: 855mm/1,810mm
- Min/Max height: 145mm/1,940mm
- Width between posts: 3,000mm
- Lifting time: 40 seconds
- Electrical requirement: 400V 3Ph (Standard), 230V 1PH (Option)
- Motor Power: 3kW
- Net weight: 1,250kg