

LOGIK 8P



WALL-MOUNTED CCD WHEEL ALIGNER

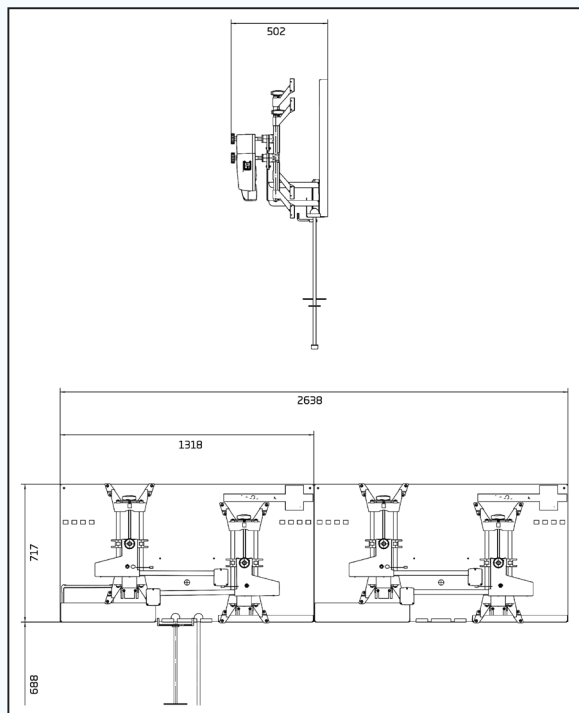
The Logik 8P is a wall mounted, 8CCD wheel alignment system from Hofmann Megaplan. It consists of 2 wall-mounted panels that serve as both storage and charging station for the CCD sensors and 'ToughPad' operators tablet.



Awaiting updated images. UK specification includes premium quality 3-point clamps, not the 4-point clamps shown

SPECIFICATIONS

Power supply:	230/115V AC (1Ph) – 50/60Hz
Single panel net weight:	28kg
Clamp and sensor net weight:	5kg
Total net weight:	76kg



KEY FEATURES

- Compact, wall-mounted 8CCD wheel alignment system.
- Stored on two wall panels, that also serve as a charging station for the CCD sensors and ToughPad operators tablet, which can be located anywhere in the workshop for maximum installation flexibility.
- Premium quality Italian-engineered 3-point clamps - Lighter to carry and arguably faster to set-up than any other clamp of similar design on the market.
- Alignment process is managed via the ToughPad tablet, which communicates with the sensors via Bluetooth, for complete portability around a vehicle:
 - 10" touch screen.
 - Extremely robust - rubberised waterproof, dust-proof and shatterproof cover.
 - Windows 10 operating system with Wi-Fi connection.
 - Magnetic back panel - will attach to any steel surface while making adjustments.